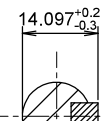
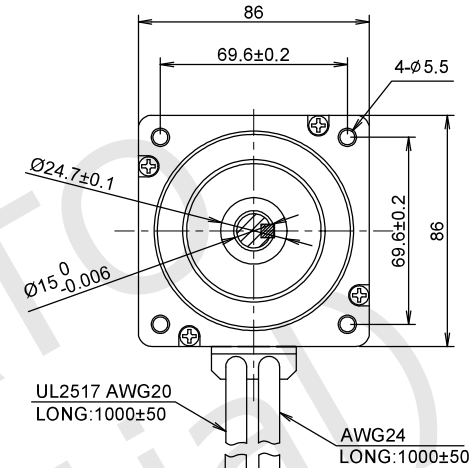
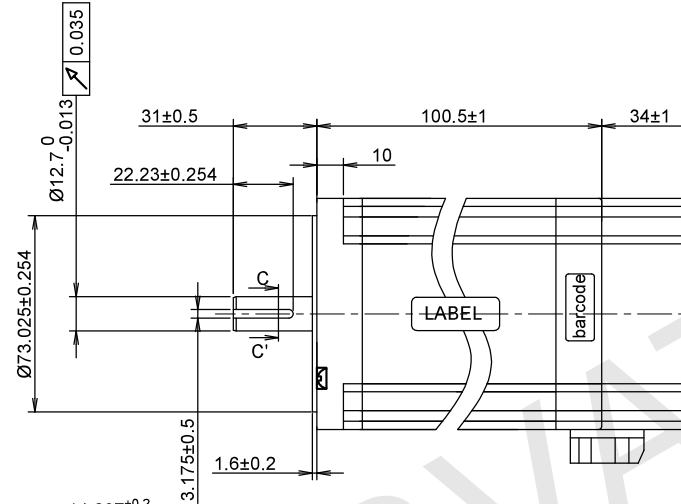
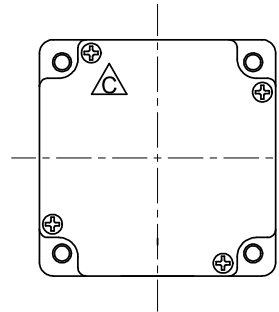
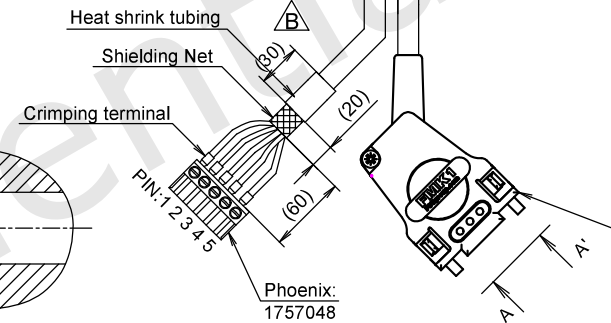
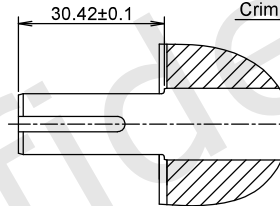
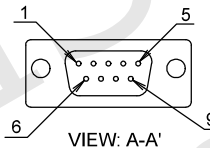


RoHS



Key: 3.175\*3.175\*22.23

C-C' VIEW

MOLEX:1727040095  
MOLEX:1727040009  
MOLEX 1731120653  
MOLEX 1731120200

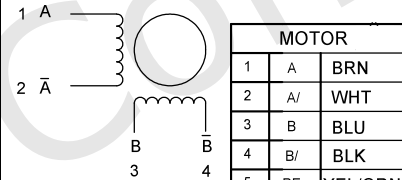
## ENCODER SPECIFICATIONS

ENCODER TYPE	Incremental
POWER SUPPLY	5.00 Vdc
RESOLUTION	1000 ppr
OUTPUT TYPE	Line Driver

## MOTOR SPECIFICATIONS

STEP ANGLE	1.8° ±5%
RATED CURRENT	10.0 Amps/Ph
HOLDING TORQUE	9.60 Nm Min.
RESISTANCE	0.31ohm ±0.1 at 25°C
INDUCTANCE	1.80 mH ±20% at 1kHz, 1Vrms
ROTOR INERTIA	1900 g.cm <sup>2</sup>
INSULATION CLASS	Class B, 130°C
DIELECTRIC STRENGTH	750 Vac 1 minute
IP CODE	IP40
PULL OUT TORQUE	---

## WIRING DIAGRAM



ENCODER
1 5Vdc
2 ---
3 Z
4 B
5 A
6 GND
7 Z/
8 B/
9 A/

MOTOR
1 A BRN
2 A/ WHT
3 B BLU
4 B/ BLK
5 PE YEL/GRN

EXCITING SEQUENCE(TWO PHASES)  
VS.DIRECTION OF ROTATION

STEP	A	B	A̅	B̅
1	+	+	-	-
2	-	+	+	-
3	-	-	+	+
4	+	-	-	+

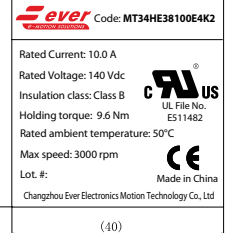
CLOCK WISE VIEW FROM MOUNTING SIDE

## LABELS

YYWWXXXXX

Stator barcode label

(25 x 8)



BACK EMF	---
DETENT TORQUE	---
WEIGHT	2300 g. approx
TEMPERATURE RISE	80K Max.
OPERATING TEMPERATURE	-20°C ~ +50°C
STORAGE TEMPERATURE	-20°C ~ +70°C
SHAFT AXIAL LOAD	60 N
SHAFT RADIAL LOAD	220 N (ON FRONT SHAFT END)

UNIT: mm  
UNLESS OTHERWISE SPECIFIED TOLERANCES  
DIMENSIONS : ±0.3 mm DEGREES : ±5%  
GEOMETRICAL TOLERANCE FOR FEATURES WITHOUT INDIVIDUAL  
TOLERANCE INDICATIONS:GB/T 1184-K EQU ISO 2768-2:K  
ORTHOGRAPHIC PROJECTION

REV

00a - first emission  
00b - Changed the cabling mode.  
00c - Changed the screw position on rear flange.  
01c - Updated the label for UL requirements.

SPECIFICATION	Strm03008-01c
DESIGNER	Ever China
CHECK	Mario Bianchi
APPROVED	Matteo Caldi
DATE	01 / 12 / 2025

MT34HE38100E4K2  
STEPPING MOTOR SPECIFICATION

www.everelettronica.it

Mod. 8.2-5 Rev.02