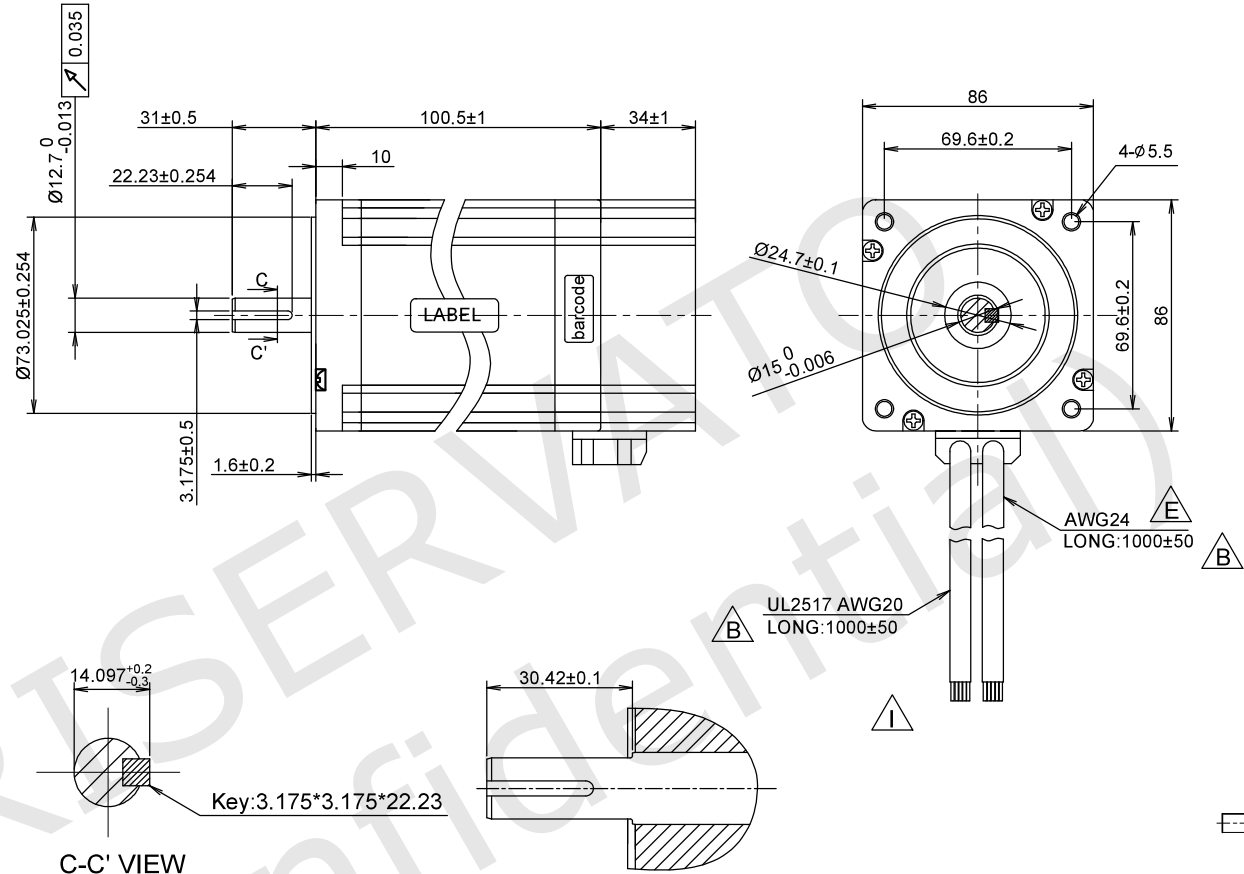
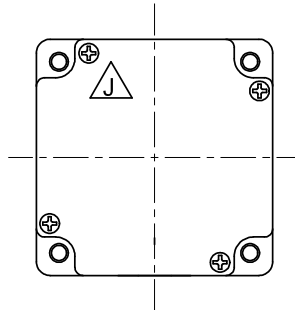


RoHS



ENCODER SPECIFICATIONS

ENCODER TYPE	Incremental
POWER SUPPLY	5.00 Vdc
RESOLUTION	1000 ppr
OUTPUT TYPE	Line Driver

MOTOR SPECIFICATIONS

STEP ANGLE	1.8° ±5%
RATED CURRENT	10.0 Amps/Ph
HOLDING TORQUE	9.60 Nm Min.
RESISTANCE	0.31ohm ±0.1 at 25°C
INDUCTANCE	1.80 mH ±20% at 1kHz, 1Vrms
ROTOR INERTIA	1900 g.cm ²
INSULATION CLASS	Class B, 130°C
DIELECTRIC STRENGTH	750 Vac 1 minute
IP CODE	IP40
PULL OUT TORQUE	---

A

A'

B

B'

C

C'

D

D'

E

E'

F

F'

G

G'

H

H'

I

I'

J

J'

K

K'

L

L'

M

M'

N

N'

O

O'

WIRING DIAGRAM

ENCODER

RED 5Vdc

BLU Z

YEL B

GRY A

BLK GND

PUL Z/

GRN B/

PIK A/

MOTOR

A WHT

A/ BLK

B BRN

B/ BLU

PE YEL/GRN

CLOCK WISE VIEW FROM MOUNTING SIDE

STEP 1 A B A' B'

2 + + - -

3 - - + +

4 + - - +

CW CCW

SPECIFICATION

DESIGNER

CHECK

APPROVED

DATE

01 / 12 / 2025

00b - Modified the cable length.

00c - Changed the encoder connector shell and resistance value.

00d - Changed the encoder connector shell and lead wires type.

00e - Changed the leadwire of the encoder from AWG26 to AWG24

00f - Modify the encoder connection pin definition.

00h - Swap the lead wires colours of the pins.

00i / 01i / 01j / 02j - Removed the connectors and add the company logo on label and change screw position.

LABELS

YYWWXXXXX

Stator barcode label

(25 x 8)

ever Code: MT34HE38100E4K1

Rated Current: 10.0 A
Rated Voltage: 140 Vdc
Insulation class: Class B
Holding torque: 9.6 Nm
Rated ambient temperature: 50°C
Max speed: 3000 rpm
Lot. #:
Changzhou Ever Electronics Motion Technology Co., Ltd.

UL File No. E511482
CE
Made in China

MT34HE38100E4K1
STEPPING MOTOR SPECIFICATION

www.everelettronica.it

Mod. 8.2-5 Rev.02